

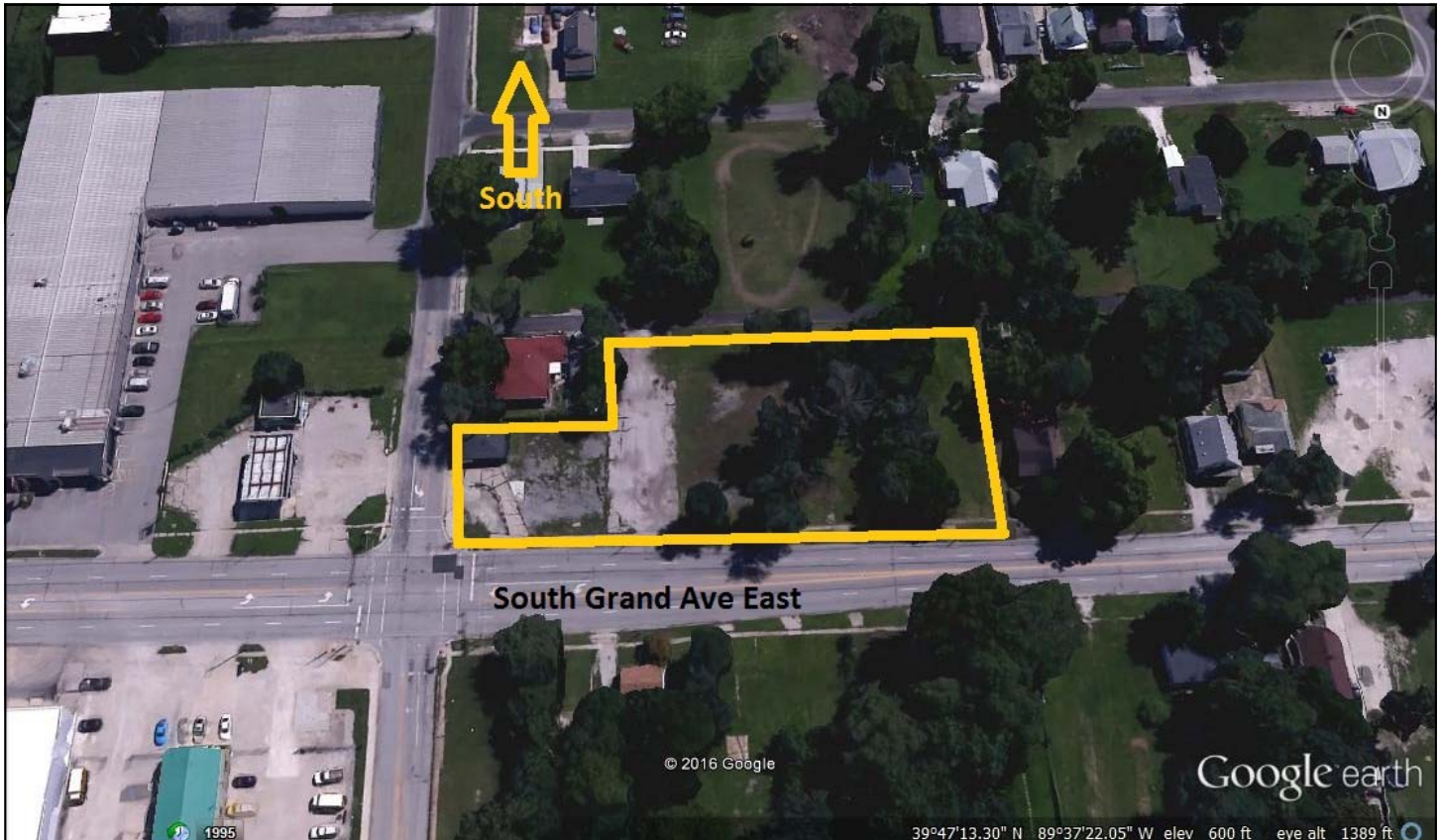
## VACANT LOTS

## FOR SALE



DEVONSHIRE REALTY

2334 South Grand Ave East, Springfield, IL 62703



### PROPERTY OVERVIEW

1.2 acres available for development. High visibility with 13,500 vehicles passing per day. Zoned R-2 in an area with several neighbors with commercial zoning classifications. 8 parcels totaling 381 feet of South Grand frontage. Multiple existing entrances. 2 blocks or less from Advance Auto Parts, Dollar General, O'Reilly Auto Parts and Popeye's.

### DETAILS

|               |           |
|---------------|-----------|
| <b>SF:</b>    | 51,576    |
| <b>ACRES</b>  | 1.18      |
| <b>PRICE:</b> | \$150,000 |
| <b>TAXES</b>  | \$1,065   |

**AREA DESCRIPTION:** Other retail establishments in the area. Minutes from I-55/I-72.

### FOR MORE DETAILS CONTACT:

**Team Mathis | [tmathis@cbcdr.com](mailto:tmathis@cbcdr.com)**  
Coldwell Banker Commercial Devonshire Realty

**Cell** 217-377-1944  
**Fax** 217-726-3181

427 E. Monroe, Suite 400  
Springfield, IL 62701

**CBCDR.com**

©2015 Coldwell Banker Real Estate LLC, dba Coldwell Banker Commercial Affiliates. All Rights Reserved. Coldwell Banker Real Estate LLC, dba Coldwell Banker Commercial Affiliates fully supports the principles of the Equal Opportunity Act. Each Office is Independently Owned and Operated. Coldwell Banker Commercial and the Coldwell Banker Commercial Logo are registered service marks owned by Coldwell Banker Real Estate LLC, dba Coldwell Banker Commercial Affiliates.